

Ceiling Mounted Dehumidifier

DJDD-2481E



Instruction For User



Directory

Introduction	2
Important safety instructions	3
Structure	4
Dehumidifying technology	5
Installation	6
Control panel	7
Power on	8
Protection function	8
Caution in use	9
Common faults removing	10
Technical parameters	11
Performance	11
Mainenance	12
What in the box	13



Important safety instructions

Please read all the instructions carefully before using the machine

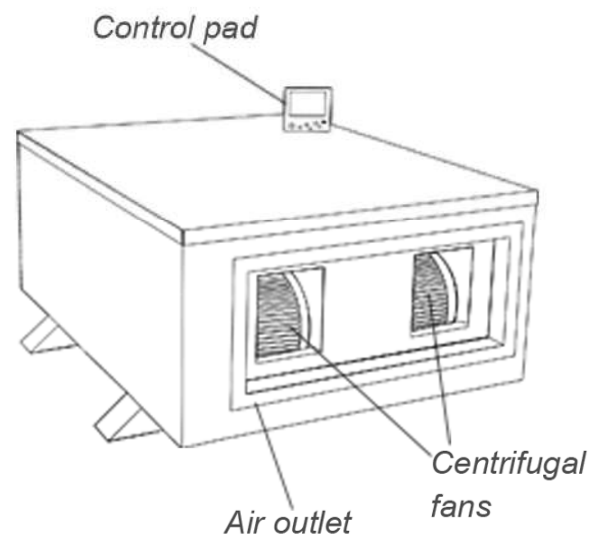
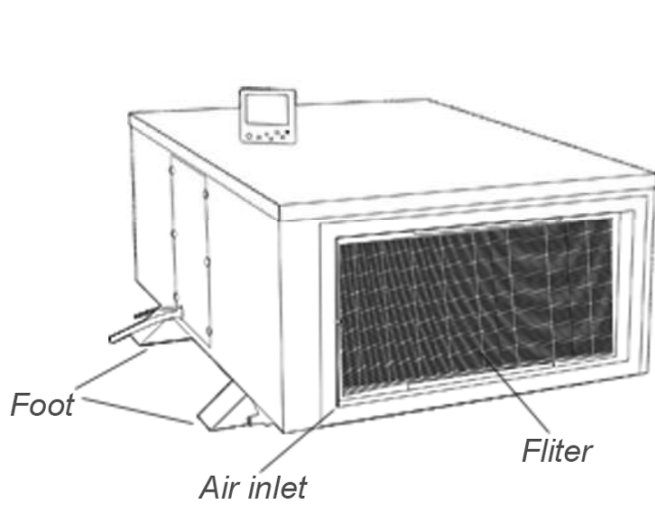
Do make sure the power supply is 380V/50Hz before power up the machine

- ☐ Don't power on/off the machine by connecting/cutting the power supply
- ☐ Don't roll or damage the power cord when install or remove the machine
- ☐ Don't put finger or any other rodlike object into the machine
- ☐ Do cut off the power cord before cleaning or maintain the machine
- ☐ Don't use in arrow and sealed space, make sure to connect the ground lead.
- ☐ Don't do any change of machine unless guiding by our technicians

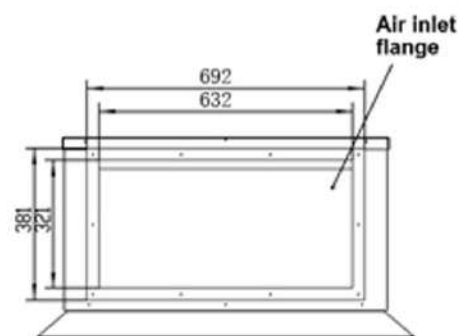
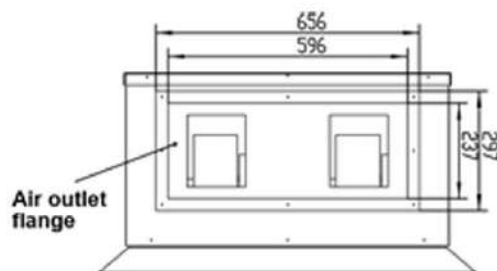
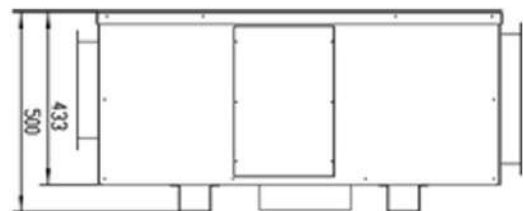
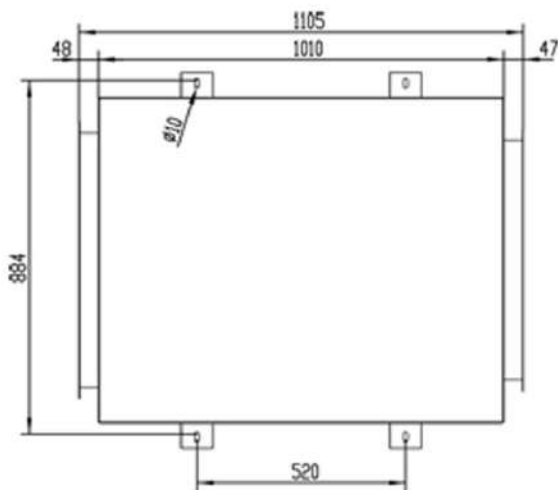


Attention: The machine has loss and dislocation phase protector, when the connected three phases outer power supply is not correct as the machine setting , the protector will be disconnected, all the indicator on control panel will be regularly display, but the machine will not run. Please correct the power supply phase connection, and restart the machine at this condition. This operation requires professional electric technicians.

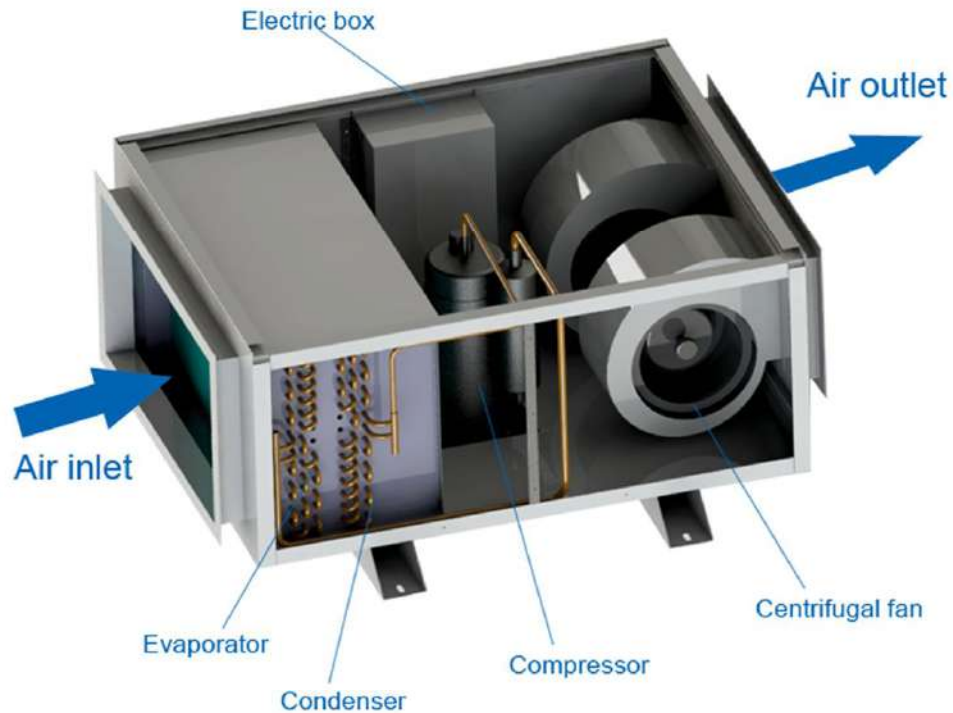
Structure



Sketch of the shell



Dehumidifying Technology

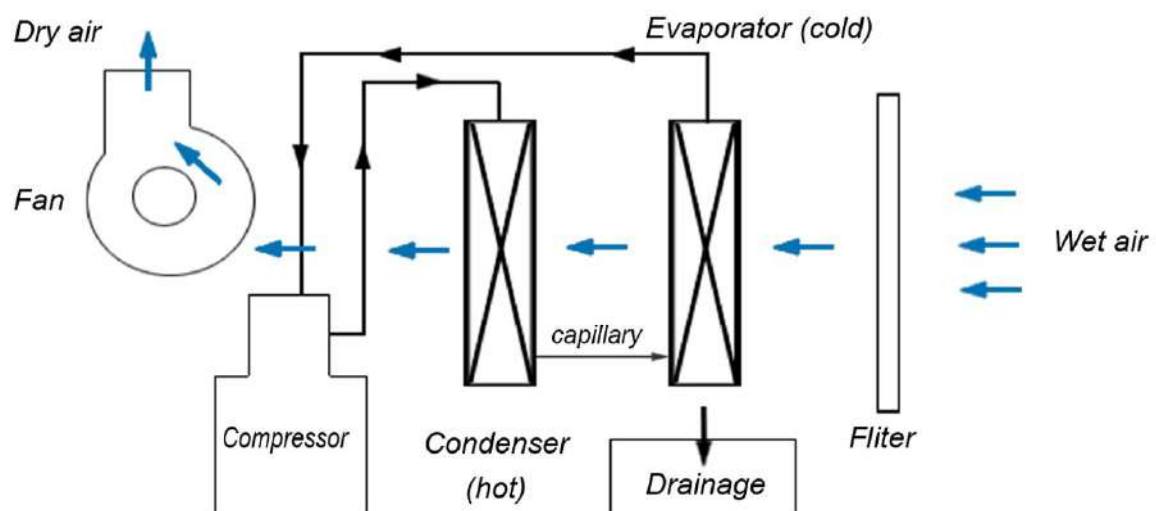


Refrigerant inside circulation

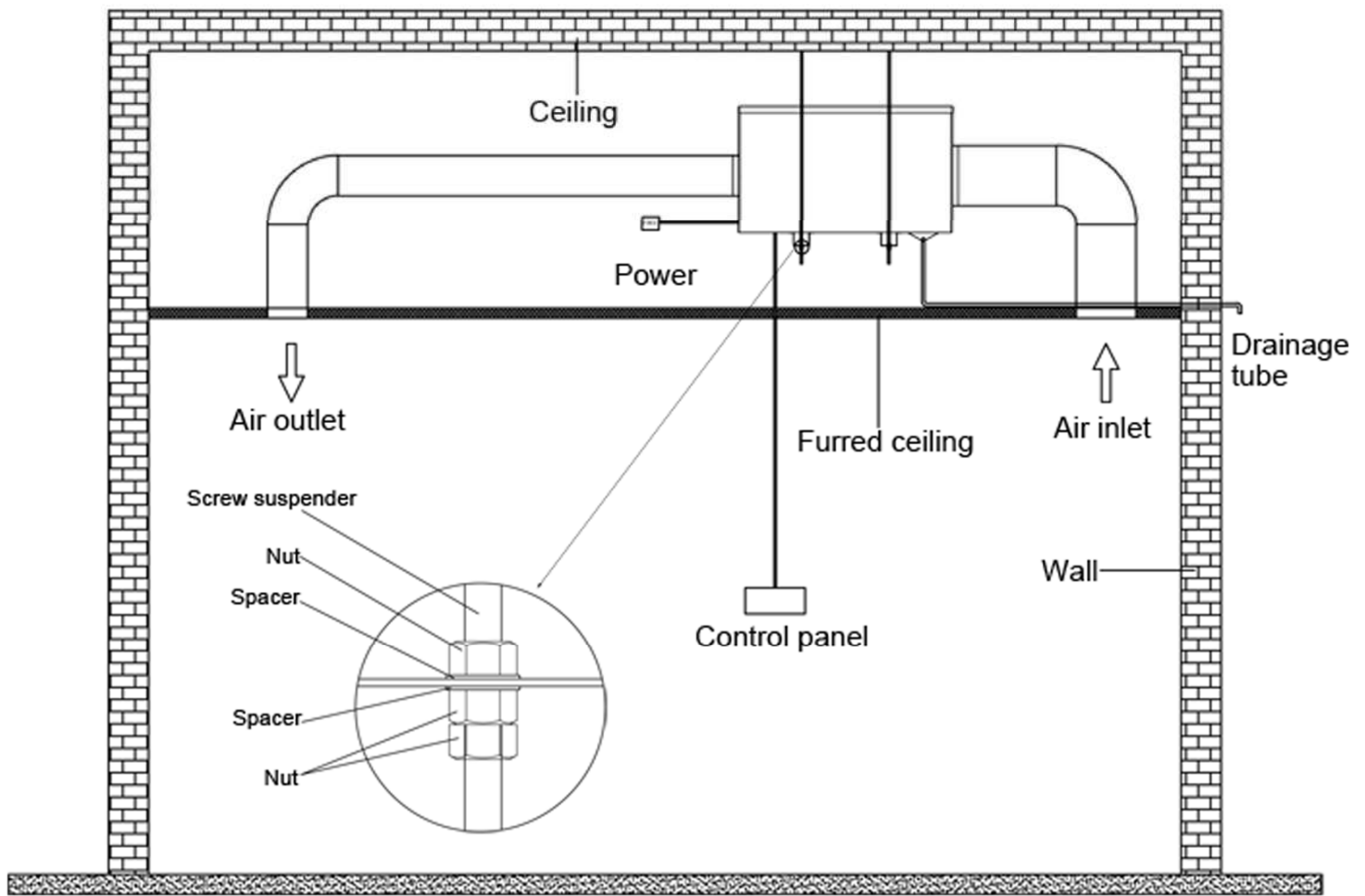
Compressor→high temperature high pressure gas→Condenser→low temperature high pressure gas
→capillary→low temperature low pressure liquid→Evaporator→low temperature low pressure gas→
compressor

Air outside circulation

Wet air→air inlet (fliter)→cooling by evaporator (the moisture become water drop to tank)→Con-
denser→Hot dry air→room



Installation

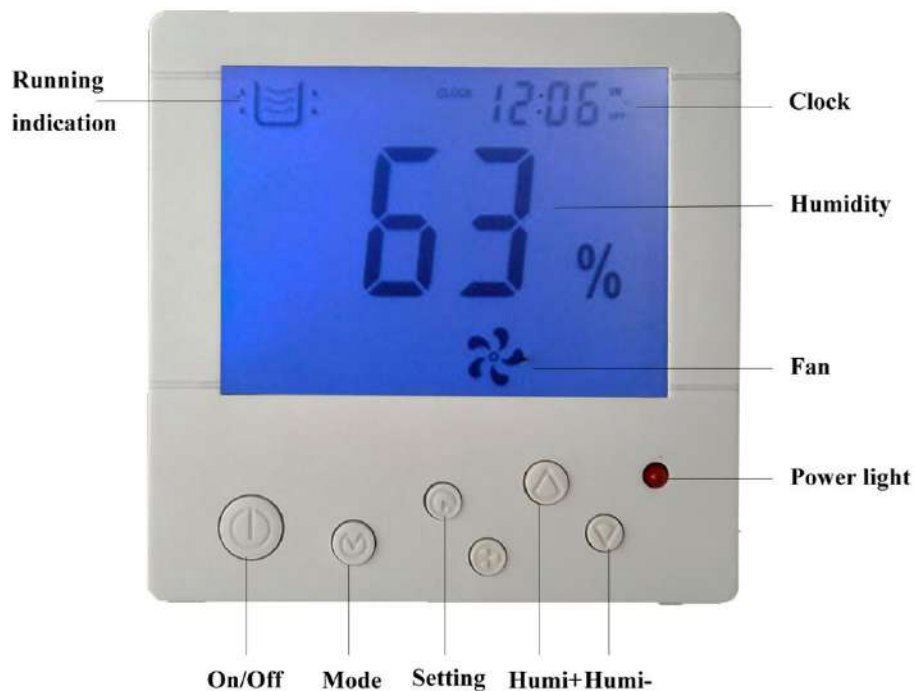


Attention

Install the machine stably with screw suspender on the ceiling, and make sure there have over 2 degree slant angle to the drainage tube for smooth continuously drain.



Control Panel



Key Function

1. "Power"

On: press the key into opening mode

Off: press the key into closing mode.

2. "Time" Press the key into timed on/off setting mode.

3. "+" Press the key to set the humidity value up with 1%RH scale in running mode. Press the key to set the hours up with 1 hour scale in timed on/off setting mode.

4. "-" Press the key to set the humidity value down with 1%RH scale in running mode. Press the key to set the hours down with 1 hour scale in timed on/off setting mode.

5. "Humidity display" Current ambient humidity display when in standby mode and running mode. Blinking when at humidity setting mode.

6. "Running indicator light" Blinking when the machine running.

7. "Defrosting indicator light"

Blinking when the machine is automatic defrosting

8. "Timed on/off hours display"

Blinking when in timed on/off setting mode

9. "Ambient temperature display"

Light on when in standby mode and running mode

10. "Dehumidifying"

Light on when in running mode and

blinking when in the 3 minutes delay protection mode.





Power On

1. The machine goes into standby mode when connected to power supply (plug), LCD screen lighting to display current ambient humidity and temperature.
2. Press the "Power" key to start the machine
3. Humidity setting: press "+" or "-" key to adjust humidity you want, the dehumidifier will start working when the set humidity is 3% less than the current humidity, the dehumidifier will stop working when the set humidity is 3% more than the current humidity.
4. Time set: press the "time" key into timed on setting mode, "timed on hours" light blinking, press "+" or "-" to set hours up or down. Press the "time" key again into timed off setting mode, "timed off hours" light blinking, then press "+" or "-" to set hours up or down. Press the "time" key exit timed on/off setting mode. Please return hours to zero when you don't need the timed on/off function after power off, the machine has memory function when you power on.
5. After setting the timing mode, if the machine is shutdown, it will run all the timed on/off setting; if the machine is running, it will run timed off setting only.



Protection Function

1、 Automatic defrost protection function

The dehumidifier will defrost automatically when it frosts on a certain level on the evaporator, compressor shutdown. The dehumidifier will start automatically when defrosting is finished. We set the machine defrost when ambient temperature is under 18°C.

2、 Compressor delay start protection function

If you want to start the machine in 3 minutes after shutdown dehumidifier, the compressor will start after 3 minutes for delay protection.



Caution In Use

- ★ Do not tilt the machine more than 45 ° in moving or installation to avoid damage to the compressor.
- ★ Working temperature scope of the machine is 5 °C ~ 38 °C.
- ★ The room temperature will go up around 3°C from compressor heat dissipation when dehumidifier running, it's normal phenomenon, please feel free to use.
- ★ It's not necessary to use dehumidifier when the room temperature is below 10°C, the absolute humidity is quite low at this condition.
- ★ Please try to seal environment better to increase the effect of dehumidifier.
- ★ Do not place the machine in the area which may come into contact with water or chemical.
- ★ Do not use any relay, extension line or adapter to connect the power of machine.
- ★ Do not place the machine next to the stove, heater and other equipment will dissipate heat, and area with direct sunlight or wind and rain.
- ★ Do place the plug stably and clean the dust on power line.
- ★ Do not damage or modify the power line, do not repair by yourself and disassemble or modify the machine.
- ★ Do place the drainage tube smoothly for continuously drain.
- ★ Please shutdown the machine and cut power when in malfunction.

Common Faults Removing

Failure phenomenon	Cause Analysis	processing method
The machine is not running	Power cut	Restore the power
	Power is not normal	Restore power
	Power plug is not plugged in	Put plug into the receptade
	Fuse blowout	Replace the fuse
Poor dehumidification fundion	Filter Clogged	Clean the filter
	Air inlet and outlet blocked	Remove obstructions to make good ventilation
	Windows and doors is not dosed	Close doors and windows and vents
	Refrigerant leakage	Contact for maintenance
Cannot reach suitable humidity level after long time running	Doors and windows are not closed	Close doors and windows and vents
	Vapour source existed in the room	Close vapour source
	Room too large	Provide right room size to buy correct machine and quanties
Noise abnormally	The machine placed not stably	Placethe machine stably
	Filter Clogged	Clean the filter

1. When the malfunction can not be removed and recognized, please contact the supplier for maintenance service, do not attempt to disassemble the machine to repair without guide.

2. When dehumidifier is running or stopping, you will hear the sound of refrigeration cycle, it is a normal phenomenon, not a fault.

3. Discharge hot air from outlet is a normal phenomenon.

Technical Parameters

Model no.	DJDD-2481E
Power supply	380V-50Hz
Rated input power	4000W
Rated input current	7.2A
Air flow	2400 m ³ /h
Applying area (2.6m floor height)	180-280 m ²
Nominal capacity	34000 Btu
Nominal dehumidification	240 liters per day (30° RH80%)
Working temperature	5-38°C
Gross weight	130 kgs
Net Weight	150 kgs
Overall dimension	L1107*W940*H500 mm

It will be not noticed additionally if any change of above parameters, please contact with supplier.

Performance

Dehumidifying Capacity at Different Ambient Temperatuer and Humidity Conditions										
T/RH	10℃	10℃	15℃	15℃	20℃	20℃	30℃	30℃	32℃	32℃
	60%	80%	60%	80%	60%	80%	60%	80%	60%	80%
DJDD-2481E	52	68	72	97	99	134	183	240	205	274
liters per 24 hours										



Maintenance

Do shutdown the machine and cut power before maintenance.

General maintenance

Wipe the body with soft cloth in daily use. Use a wet hard cloth to wipe dirty body, or use a soft cloth moistened with a little diluted neutral detergent.

Regular maintenance

Filter Cleaning: it will affect the dehumidifying effect or cause malfunction if accumulate dust on filter , it needs to be cleaned regularly, clean it at least once a month. Use dust catcher to remove dust or put filter into clean water (<40 °C) to wash, then place filter back after cleaning.

P.S.

The filter cannot be put in sunlight directly or roasted to avoid distortion. The filter must be placed before power up machine.

Long time of non-use

Cut the power or unplug power line to put it in dry and shady place. Do not put down the machine to avoid damage and malfunction.